



CONTENTS:

- 2 Pinery Trash Program
PHA Board Members
- 3 'Twas the Season
Kindergarten Info
Spring Gala
- 4 Covenant Corner
- 5 Reata Ranch
PHA Election Results
ACH Payment Schedule
- 6 Robert Chapman
Art Show Coordinator
CodeRED
- 7 Trash Form
- 8 Black Forest Garden
Club
- 9 Firewise Community
- 10 Wildfire Preparedness
Emergency Numbers
- 11 Advertisers' Info
- 12 Feeding Wildlife
- 13 If Only I had a Truck
- 14 Spring Fling
Potholes
Yearly Trash Discount
- 15 Public Schools
NL Deadline
- 18 Classified Ads
- 24 Directory Page
- 22 Community Calendar

Architectural Review Committee Election

The 2017 ARC Election will be held during the May 10, 2017 General Meeting. The election will be held to fill three two-year terms which will be completed May 2019. Members elected will serve beginning with the June 13, 2017 ARC meeting.

Pinery HOA Bylaws limit service of Board and Committee members to 3 2-year terms. Having fulfilled his maximum term limit, Paul Brown will be leaving the Committee when his term completes after the May ARC meeting. We sincerely appreciate Paul's service to the Community in this important capacity!

Once the Committee is in place, in addition to electing ARC officers, two members are appointed by the

Committee to represent the ARC on the PHA Executive Board. Please be aware that, if elected, you may be asked to serve in this capacity as well.

The committee meets on the second Tuesday of each month; special meetings are scheduled as needed. Each committee member is assigned responsibilities requiring four or more hours to complete during the month outside the meeting.

Information for candidates is needed **no later than April 10** for publication in the May 2017 newsletter. Please call 303-841-5305 or contact ARC@pinery.org for information.

Please consider this important opportunity to serve your community.



2017 Pinery Events **Save the Dates!**

Pinery Garage Sale
May 19 & 20

**Pinery Picnic
& Kids' Fishing Derby**
August 12

Pinery Trash **Payments**

for the 2nd quarter
of 2017
(Apr., May, June)
will be due

March 8, 2017

*(This includes quarterly and **March** billed yearly customers.)*

Pinery Trash Program

When Contacting WM

- **Email:** Many of you have found it helpful to contact Waste Management by email when requesting a large item or with any questions. That email address has changed to FCHOA@wm.com. This WM team is familiar with the PHA trash program and is available to assist Pinery residents.

Or (if email is not convenient)

- **Call:** WM Customer Service at **303-797-1600** identify yourself as a resident in The Pinery Preferred Hauler Trash Program. Do not add the directional sign (N, S,E,W) when giving your address.
- Contact WM as soon as possible if your trash was missed! If it is after 2 p.m., call the next morning.
- If you still need help with a trash issue, call the PHA Office at (303-841-8572).



Yearly Trash Payment Discount Offered Again This Year

The PHA is offering the same great Trash Program discount of \$20.00 if members pay a year in advance. If you were a March yearly trash member last year, you will have received an invoice the end of February with the discount already applied. If you want to stop your yearly payment, you can go back to quarterly payments just by paying \$64.50.

If you are a quarterly trash member, you may have noticed the discount mentioned on the 2nd Quarter invoice the end of February. If you decide to pay for the year, the total is \$238.00 with the discount. Just send the \$238.00 for receipt no later than March 8th.

Please ensure you include any outstanding payments as indicated on your bill.

Note that the yearly discount is not available if you need to put holds on your service – sorry snowbirds!



PHA Board of Directors

Cyndi Mumm
President

Sonia Eyre
Vice President

Ray Guth
Secretary

Ronnie Johnson
Treasurer

Jay Colas
Director

Robert Husson
Director

Jim McGannon
Director

New officers to be elected at the February Executive Board meeting



“The Pinery Homeowner” is a publication of The Pinery Homeowners’ Association, Inc. (PHA), a private, not-for-profit organization. The PHA reserves absolute editorial discretion over the content of the *Homeowner* and may reject a submission for any reason. Advertisement in *The Pinery Homeowner* should not be construed as an endorsement of products or services by The Pinery Homeowners’ Association. The *Pinery Homeowner* is the medium through which the PHA communicates with its members. It is not a forum for the views of individual members of the PHA or other individuals or groups.



'Twas the Season

We all enjoy the wonderful holiday lighting presented by our residents and appropriate for the season. With the holidays over, please be sure to take down your lights and yard decorations in a timely fashion. Winter holiday lighting still apparent on our residences in the warm spring and summer months lends the appearance of neglect. Take advantage of one of our many wonderful warm weekends to get this item off the to-do list!

Mountain View Elementary

A great choice for primary education



Kindergarten

17-18 Registration

Register now! We have filled two full time classes. We have started a waitlist for the third. For more information and links to our registration packets, please visit our website! mvp.dcsdk12.org



8502 N Pinery Parkway

Parker, CO

(303)387-8675

Let's
Travel
Around The World

FOR OUR SCHOOLS



Mountain View &
Northeast Elementary
2nd Annual Spring Gala

SATURDAY, APRIL 29TH, 2017
THE COLORADO GOLF CLUB

Purchase tickets today!
handbid.com/auctions/bids4kids-2017



COVENANT CORNER

The Pinery Architectural Review Committee



With the many home sales in the Pinery in 2016, the Pinery Architectural Review Committee continues its efforts to work with residents so that changes to properties are Covenant compliant. The ARC also provides assistance to bring properties into compliance where violations are present. The Committee enjoys getting to know our neighbors in this way.

The ARC is comprised of seven members who are elected for alternate two-year terms. Election for three or four positions is held during the May PHA General meeting. **The ARC meets the second Tuesday of every month at 6:30 pm. In the Community Room of the Pinery Fire Station,** unless otherwise announced via this newsletter or at www.pinery.org. The ARC has responsibility for Pinery Filings 1 through 8A (including Pinery Estates) and Fairway Ridge, almost 1900 properties.

The committee serves without compensation with a part-time paid staff person. ARC office hours are Tuesday through Thursday 8 a.m. to 3 p.m. The office is also staffed on Fridays prior to ARC meetings.

In an effort to address homeowner issues as quickly as possible at meetings, homeowner submittals received by noon on Friday prior to the meetings are reviewed beginning at 6:30 a.m. Review of any new construction plans begin at 7:30 p.m. or when homeowner reviews are concluded. Submittals received after noon on the Friday are heard after other issues are discussed at the meeting.

Following is a summary of 2016 activity by the Architectural Review Committee.

Homeowner Submittals Approved: ----- 215

Deck/Hot Tub/Patio -----	42
Driveway Changes and Additions -----	3
Exterior Color -----	45
Fencing/Kennels -----	30
Home Additions (including garages) -----	3
Landscaping Changes -----	30
Misc. (e.g. air conditioner, post lights, etc.) -----	10
Roof Replacement (new material or color) -----	15
Sheds -----	10
Siding Change -----	11
Solar, etc. -----	1
Window Replacement / Changes -----	15

Submittals Denied ----- 13

New Home Plans Reviewed and Approved: ----- 4

Violations Acted on: ----- 55

Parking Issues -----	18
Trash Containers Stored in View -----	2
Unapproved Exterior Modifications -----	8
Dead Trees/Yard Maintenance -----	8
Exterior Debris -----	11
House Maintenance -----	2
Other (Bus. Use, Nuisance, etc.) -----	6

Covenant Violation Notices Filed with

Douglas County Clerk and Recorder ----- 1

Compliance Notices Filed for Previously Filed

Violation Notices ----- 5

As we approach the busy, warmer months of 2016, we want to thank Pinery residents for the pride they express in their community through compliance with Covenants. Our Covenants allow us to maintain the unique qualities that led us all to select the Pinery for our home. If you have questions, please contact the ARC office at 303-841-5305 or ARC@pinery.org or feel free to attend any of our open meetings. We welcome your interest.

Reata Ranch – Proposed PD Amendment

A preliminary informational meeting was held February 7th regarding the proposed PD Amendment to the Reata South Planned Development – Reata Ranch. Residents from the Hidden Village and the Pinery were invited. The proposal would be for the development of 22 home sites with an average lot size of 2.58 acres located northwest of the intersection of Sunridge Hollow Rd. and Betts Ranch Rd.

No plans have been submitted to Douglas County at this time. Information will be Available on the Pinery HOA website as it is received.

Holiday Schedule Trash Pick up

- New Year's Day
- Memorial Day
- 4th of July
- Labor Day
- Christmas Day

If the holiday falls on Monday, trash and/or recycling pickup will be on the Tuesday following the holiday.

The 2017 PHA Election Results

PHA elections were held at the 2017 Annual Meeting on January 11.

Executive Board - Ronnie Johnson, incumbent was elected to the Executive Board. So glad to have you on board!

Community Services Committee (CSC) - The CSC welcomes Mary Colas, Jim McGannon and Erin Miller to the CSC. The PHA is very grateful for their willingness to serve.

The 2017 Proposed Budget was also approved at the Annual Meeting.

2017 ACH Trash Payment Schedule

Following is the schedule for the ACH billing. Since you will not be receiving any kind of billing, please keep this schedule for your reference so that you are aware of when the monies will be paid out of your bank account to the PHA. These dates can also be found on our website, at www.pinery.org.

\$64.50 will be paid out of your bank account on the following dates:

2017

March 8
June 7
September 6
December 6

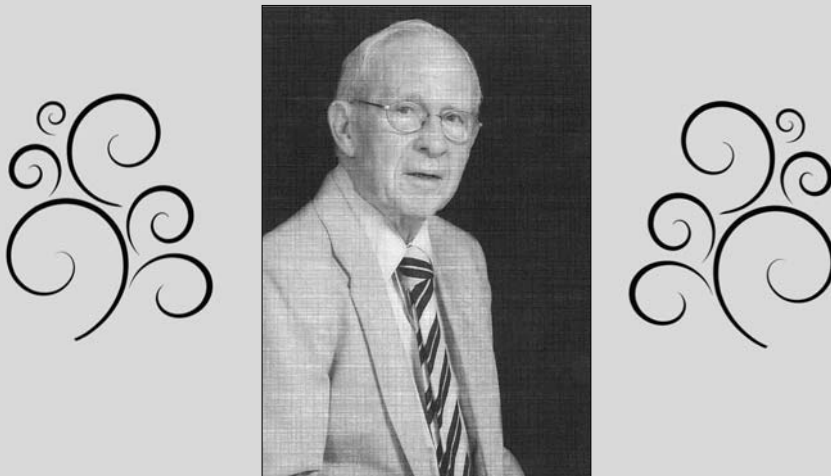
Please be sure to inform the PHA office if your account changes for any reason, or if you wish to discontinue your ACH payment.



Use of the Pinery Logo

Because the Pinery logo is a registered trademark, it may not be used for any purpose by either an individual or corporation without prior written approval of the PHA Board prior to use.

In Honor of
Robert William Chapman
October 31, 1927—January 13, 2017



Robert Chapman was a World War II veteran and a valued member of the Pinery community. He served on the Pinery Water and Wastewater District for 20 years, nine of which he was Chairman. He also served the community as a member of the ACC (Architectural Control Committee) in 1992.

The Pinery Homeowners' Association appreciates his many years of dedicated service to this community.

**Douglas County
Emergency Notification
System—CodeRED**

Life can change in a moment - make sure you are connected to the CodeRED emergency notification system in Douglas County! The system, CodeRED, is a high-speed telephone emergency notification service allowing public safety agencies the ability to deliver pre-recorded information to targeted areas within the county.

Douglas County's public safety agencies encourage everyone to register their contact information in the CodeRED system (reverse 911). Registration is not automatic, but it may be critical to your safety and that of your family.

Please register online at douglascountycodered.com

**Seeking a
Pinery Art Show Coordinator**

The Pinery Art Show has been a Pinery tradition for the past 15 years. In that time, it has varied in its style and venue. This year a date and location have not yet been set. If you would be interested in coordinating this event and working in conjunction with the CSC, please contact the PHA office at 303-841-8572. We sincerely appreciate all the hard work and creativity Cyndi Mumm has contributed during her many years coordinating the event.



**Anonymous
Complaints**

Reminder: The Architectural Review Committee is unable to address anonymous complaints.



**Classic Pinery Filings
Covenants Available
Online**

Covenants for Pinery filings 1-8A can be found on our website,

www.pinery.org

From the menu on the left of the screen, select Covenants.

If you don't know your filing, there are instructions to help you determine which filing you are in.



PHA Trash Program Enrollment Form

If you are not in the Pinery Trash Program, you might want to consider joining with the over 1500 other participating homeowners. The program offers state of the art trash service including Single Stream Recycling. This provides you, with the opportunity to put paper and other recyclables together into a labeled container (we provide the labels) of your choice. Recycling must be separated from your regular household trash, but the recycling center now separates the paper from the bottles, cans, etc. You may choose to use a container with wheels and a lid for ease of handling.

In addition, our program includes the removal of one Large or Bulk Item every month. Give Waste Management a call, set the item out with your regular household trash and say goodbye. That's twelve times a year you can get rid of a sofa bed, mattress, chair or other item without additional charges. If you have more than one item in a month low rates are offered.

Go to our website, www.pinery.org for more details.

All trash starts must be received in the PHA office no later than 1 p.m. on the Thursday prior to the desired Monday service day.



YES, I would like to join the Pinery Trash Program. Please begin my trash collection and billing under PHA's program as of the date checked below. I understand that the normal cycle will be billed in advance, quarterly.

<u>Starting Month</u>	<u>Please pay</u>	<u>Paid Thru</u>	<u>Starting Month</u>	<u>Please pay</u>	<u>Paid Thru</u>
<input type="checkbox"/> January	\$64.50	March	<input type="checkbox"/> July	\$64.50	September
<input type="checkbox"/> February	\$45.75	March	<input type="checkbox"/> August	\$45.75	September
<input type="checkbox"/> March	\$91.50	June	<input type="checkbox"/> September	\$91.50	December
<input type="checkbox"/> April	\$64.50	June	<input type="checkbox"/> October	\$64.50	December
<input type="checkbox"/> May	\$45.75	June	<input type="checkbox"/> November	\$45.75	December
<input type="checkbox"/> June	\$91.50	September	<input type="checkbox"/> December	\$91.50	March

In order to participate in the Pinery trash program, property membership dues must be current. Please call 303-841-8572 to determine any membership amount outstanding or previously paid:

+/- Membership \$_____ - Total Enclosed \$_____

I understand that my next quarterly billing will include trash collection and program fees. I understand that I am responsible for canceling any other service arrangements I may have.

Name: _____

Address: _____

Phone: _____ Email: _____

AGREEMENT

By submitting this enrollment form with initial payment, the above Pinery resident and/or homeowner ("Homeowner") hereby authorizes The Pinery Homeowners' Association, Inc. ("PHA") to engage its contracted trash service to collect and dispose of Homeowner's normal household waste materials at the above described Pinery residence. Homeowner warrants that all waste materials offered for collection will not contain any hazardous, toxic or radioactive wastes or substances as defined by applicable federal, state or local laws or regulations. Homeowner agrees to pay PHA in advance within 15 days of billing for trash service at the PHA's then current rates until such time as Homeowner notifies PHA of Homeowner's termination from the PHA trash program. Failure to pay as specified which results in rebilling and/or termination will incur fees to cover the PHA cost of these actions. Homeowner shall be solely responsible to the contracted trash service for any additional services requested which are not included in PHA's normal trash program. Homeowner acknowledges and agrees:

1) that PHA is merely acting as a billing agent for the contracted trash service; 2) that Homeowner shall not receive any refund upon termination of Homeowner's participation in PHA trash program unless Homeowner provides advance notice to PHA, including address to which refund should be sent; and 3) that PHA will not be liable for any act or failure to act on the part of the contracted trash service, including, without limitation, violation of laws or regulations, injury or death to persons or animals and loss or damage to property or the environment.

Signature _____

Date _____

PLEASE NOTE: This form must be signed prior to participation in the PHA trash program.

MAIL WITH PAYMENT TO: PHA, 8170 Hillcrest Way, Parker, CO 80134.

January 2016

Black Forest Garden Club

What is Xeriscape?

Xeriscape has long been defined as a philosophy of using creative landscaping to conserve water. Almost half of all the water we use at home is dedicated to maintaining our landscape. But landscaping traditionally used in Front Range communities features plants native to regions with much higher annual precipitation. This is problematic when, in order to grow successful plants, we must supplement by using our limited surface and groundwater. Fortunately, high water demand plants are not our only landscaping option; neither is removing plants from the landscape.

The concept of Xeriscape was developed in Denver, Colorado, in response to water shortages in the 1980s. Xeriscape refers to a landscape that uses little supplemental water. It does not refer to a dry, barren landscape, and it is by no means a "no maintenance" landscape. By using plants that are well adapted, mulches that suppress weeds and conserve water, and efficient irrigation systems, these landscapes can offer color and fragrance with only monthly or seasonal gardening chores.



Xeriscape is not a landscape style or garden design. Xeriscape is a concept of water conservation that may be applied to landscapes of any style, from traditional to English, Japanese to Southwestern. They may be formal or natural looking. The principles used to develop Xeriscapes are good horticultural practices applied to our unique High Plains desert environment.



The Castle Pines North Metropolitan District has some excellent information on Xeriscaping on its website, which is:

<http://cpnmd.org/xeriscape/>

The information includes:

- The seven principles that Xeriscape uses to conserve water
- Xeriscape and Deer resistant plants (including a color plant guide)
- Lawns that use less water (Blue Gramma)
- Sample planning designs

As with any major change to your landscaping, you should submit your Xeriscape Plan to The Pinery Homeowners' Association (PHA), Architectural Review Committee (ARC). If you are not

sure that your project rises to the level of needing to be submitted to the ARC, just call the PHA at 303-841-8572.

This article was submitted by Black Forest Gardeners, a local gardening club with most of its members living in The Pinery. Individuals and families from nearby neighborhoods are also welcome. We are affiliated with the Colorado Federation of Garden Clubs. Nonmembers are welcome to attend a meeting/class to check out the club. Networking in the club is a great way to find out the best plants to grow here and when to plant them.

The March 8th meeting will be on building a plant light stand that you can use for starting seedlings or as a place for your plants to get regular light and improve their blooming. It will be held at the Volz's house at 5518 Irish Pat Murphy. For more information on the club go to blackforestgardeners.com or email us at: pinerygardenclub@gmail.com



Congratulations to Pinery Residents for Becoming a 'Firewise' Community!



What does this mean for YOU?

- Encourages Neighbors to Work Together to Keep Families, Homes & Properties Safe
- Affirms the Pinery HOA's commitment to Fire Mitigation & Community Safety
- Encourages Homeowners to take Actions that make the Pinery a Safer Place to Live
- Reduces Risk to Firefighters
- Lowers Insurance Premiums for USAA Customers (hopefully other insurance companies will follow)
- Increases Opportunity for Fire Mitigation Community Grants
- Helps Protect Wildlife, Forests and Mature Landscapes

Pinery Leading the Way for Wildfire Preparedness

*By Einar Jensen, Risk Reduction Specialist
South Metro Fire Rescue*

There are several reasons The Pinery earned its FireWise USA recognition last year. The greatest is that homeowners worked together to improve their preparedness for wildfires.

Although The Pinery hasn't had a wildfire in recent years, it could. Thus South Metro Fire Rescue deems the wildfire risk for your families and homes to be HIGH.

Last fall, the Pinery Homeowners' Association (PHA) won a \$1,600 grant from the Colorado State Forest Service to host Slash Removal Days. Slash is a synonym for the low-hanging branches homeowners cut from pine and oak trees as well as for entire clumps of junipers and fitchers, which we call "little green gas cans" for their flammability.

Based on the success of the 2016 event, the PHA and its FireWise Committee is hosting another event this spring to help residents remove hazardous vegetation from their properties. Once again, A Guy and His Tractor, a company based in Elizabeth, has been hired to conduct the FireWise Slash Removal project.

In order to qualify to participate in the slash removal events, and learn which area your property sits, residents must meet one of three criteria:

- Participate in a home wildfire assessment with South Metro Fire Rescue. These free assessments, which last 30 minutes, can be scheduled by emailing ReducingRisk@southmetro.org.
- Attend a Chipping Orientation Meeting in which s/he will learn about the four areas, the basics of wildfire mitigation and proper chipping etiquette.
- If you participated last fall, you do not need to attend again, but you do need to submit your name, address and email address to sarahmelius@comcast.net so we can add you to the list.

These meetings will be March 29, from 6-7:30 p.m. and April 6, from 6-7:30 p.m. Both meetings will be in the meeting room next to the PHA Office.

Homeowners are encouraged to contact South Metro Fire Rescue for guidance on what to cut or remove in advance of performing mitigation in order to maximize the benefits without compromising the quality of life in The Pinery. Schedule an appointment by emailing ReducingRisk@southmetro.org.

Additionally, homeowners should document the time and supplies they use for mitigation. Those records will help the PHA maintain its FireWise status and provide a state income tax credit for residents.

Emergency Telephone Numbers

Ambulance
24 Hour Line—911

Sheriff
Emergency only—911
Administration
303-660-7505

Southmetro Fire Dept.
Emergency Only—911
Administration
720-989-2000

IREA (Electricity)
24 Hour Line 303-688-3100

Xcel Energy (Gas)
(North Pinery area)
24 Hour Line—800-895-4999

Black Hills Energy (Gas)
(South Pinery Area)
24 Hour Line—800-694-8989

Pinery Water District
(water & sewer)
24 Hour Line—303-841-2797

Animals & Wildlife
Douglas County
Animal Welfare
303-660-7529

Colorado Division of Wildlife
303-291-7227

Utility Locator
811
Call before you dig!





Homeowner

2017 Information for Advertisers

When is “The Pinery Homeowner” published? It is published six times yearly: the first week of January, March, May, July, September, and November.

Who receives the newsletter? Distribution covers bulk mail to the six routes that serve the Pinery neighborhoods east of Parker Road. Total distribution is approximately 2,500 copies.

How do I submit an ad?

- Submit ads and payment to the PHA office on or before the advertising deadline. The deadline is noted in the Community Calendar section of the prior Newsletter.
- Submit ad digitally on computer disk or as an email attachment (See email address below).
- Submit ad in **at least 300 dpi**. (pdf, jpg and tif work well.)

Ad is to be sized and configured as described below.

Can I get a discount? A 10% discount is applied to ads placed for six issues or one calendar year.

Newsletter Ad Specifications			PHA Members in good standing*	Non- PHA Members
Business Card	3.5” wide by 2” high	Horizontally configured	\$40	\$70
Quarter Page	3.5” wide by 4.25” high	Vertically configured	\$70	\$100
Half Page	7.25” wide by 4.25” high	Horizontally configured	\$110	\$220
Half Page**	(on Back Cover)	Horizontally configured	\$225	\$400
Full Page	7” wide by 8.25” high	Vertically configured	\$220	\$380
Classified Ads	(approx. 35 characters/line)		\$3/line	N/A
Directory Page	(This is a two-line ad with your business name, phone number, address, email, and web site listed by category.)		\$5	\$10

***Am I a PHA member in good standing?** You are, if you reside in Pinery filings 1-8a and have paid the \$33 membership fee in one of the following ways: directly; as a Pinery trash member; or as a Pinery RV Lot lessee. Residents in filing 8b (Pinery South), Northwoods Glen (filing 11) and Misty Pines who participate in the Pinery trash program are also eligible for PHA member rates.

The “Pinery Homeowner” is published as a communications service for our residents. The PHA is not liable in the event of errors or omissions in advertising or articles contained therein. The PHA reserves the right to accept, reject or request modifications to ads submitted and does not endorse products or advertisers.

Please direct any questions to **303-841-8572** between 8:00 a.m. and 3:00 p.m. Monday through Friday.

Advertisements and payments should be sent to: **The Pinery Homeowners' Association, Inc.**
8170 Hillcrest Way, Parker, CO 80134
 or
PHA@pinery.org

COLORADO PARKS & WILDLIFE

Feeding hurts, not helps, big game



FEEDING BIG GAME CAN BE HARMFUL TO ANIMALS AND HUMANS

Feeding big game is bad for animals and dangerous for people, for many reasons.

Deer, elk, bighorn sheep and other ungulates are all ruminants—they have complex digestive systems composed of a four-chambered stomach. These animals digest plant-based food through fermentation in their specialized stomachs. Wildlife is well adapted to feed on natural food sources; but food provided by people, such as alfalfa, hay or corn, can kill big game animals.

Every winter wildlife officers around the state pick up many deer, elk, and sheep that died as a result of artificial food sources. Ruminants that ingest grain, corn, or other high carbohydrate foods can develop lactic acidosis or enterotoxaemia. These two conditions are common in ruminants in areas where they are being fed food by people. These two conditions are fatal, usually within 24-72 hours from the time the animal ingests the grain.

Ruminants can develop some tolerance to grain and corn over time, but feeding wildlife has other biological consequences. Salt and mineral blocks, corn, and grain cause animals to gather in close proximity which facilitates disease transmission. Chronic Wasting Disease in deer, elk and moose, as well as pneumonia in sheep can result. These diseases are usually fatal, but take time to develop; consequently, the people feeding wildlife often don't see the negative consequence of their actions.

These are several good reasons for the public not to feed any wild animal. The best thing people can do for wildlife is to ensure access to habitat where they can find their natural diet.

For more information on living with wildlife responsibly, visit: <http://cpw.state.co.us/learn/Pages/LivingwithWildlifeJunkFood.aspx>. To report incidents of feeding or other illegal wildlife activity contact a local Colorado Parks and Wildlife office or officer. If you wish to remain anonymous, contact Operation Game Thief at 877-265-6648. Rewards may be offered if the information leads to a citation.

Thanks for your cooperation!



Respect our wildlife!

►Big game animals can die if fed the wrong food. Corn, alfalfa, pet food, and human foods are all harmful.

►Big game animals that are fed can become demanding and dangerous.

►Feeding deer, elk and bighorn sheep attracts mountain lions to your property.

►Feeding big game can concentrate them in an area and lead to the spread of disease including CWD. ►Feeding big game is illegal.

If Only I Had a Truck

I don't own a truck. That's my excuse. How can I clean up my property if I don't own a truck? Sure it's important and will make my property safer from fire, but I don't have a truck! For years I have glared at the four trees that were leaning over my deck and all the overgrowth of brush and trees crowding each other knowing that *someday* they needed to go! If only I had a truck.

Then this fall the Pinery Homeowner's Association along with South Metro Fire arranged community "chipping days". If I were willing to do the work, cut the trees, clear the brush and stack the slash by the road, a commercial chipper would come by and remove it for free! No more excuses!

All of a sudden...after years of procrastinating... it was time to get to work. The clock was

ticking. The scheduled chipping days gave me a deadline and the motivation to get it done. This was the best deal I was going to get. I had about a month to create a magnificent pile of slash.

But where to start. The task seemed overwhelming at first. I started by trimming off dead branches that I could reach with my limbing saw (on a long pole). But I soon discovered that the job would require a long ladder and a lot more courage than I could muster! So I called in the experts and paid a private company to do the scary work of dropping the four trees that overhung my deck and hot tub.

Watching him work, straddling the top of a 24 foot ladder, removing the top 20 feet of the biggest of the trees with a hand saw I realized the brilliance of my decision. I realized that for just \$700 not

only did I save myself from serious injury but I also probably saved my deck and hot tub from getting crushed by a falling tree. Once the four large trees were gone I decided to tackle the rest of the job myself. I soon had a pile of logs and branches that would have made a whole family of beaver envious!

And then one day while we were away, a beautiful thing happened. The pile of slash disappeared! Gone! Vanished! We came home to property that was no longer surrounded by overcrowded trees and dense underbrush but instead was clean, beautiful, and much safer from the destructive powers of wild fire.

Who needs a truck anyway!

By Jeff Rucks

The next Pinery Chipping Days are scheduled for May. Don't miss this opportunity to get some important work done to clean up your property and make it fire safe. Sign up for free chipping days this Spring! Not only is the chipping and removal free, but also all your work and expenses (up to \$2,500) are tax deductible! And you don't even need a truck!

Wildlife Feeding Fine

Under Colorado law, intentionally feeding big game animals is illegal. The prohibition applies to deer, elk, pronghorn, mountain goats, bighorn sheep, mountain lions, and bears. Violators face a \$50 fine.

Colorado Parks and Wildlife hopes you won't face such a fine and that we've explained why it's best to simply let Mother Nature take care of wild animals. If you don't, you quite literally could end up loving our wildlife to death.

Join Us for a
**Spring Fling
Arts and Crafts Show**



April 15, 2017

9:00 AM to 4:00 PM

Ponderosa High School

7007 East Bayou Gulch Rd., Parker, CO 80134

Admission is Free



**Come shop for Easter and Mother's Day!
100+ vendors including many hand crafted items**

Concessions Available

For information visit www.ponderosamusic.org



All proceeds benefit the Ponderosa High School Music Department.

**Yearly Trash Payment
Discount Offered
Again This Year**

The PHA is offering the same great Trash Program discount of \$20.00 if members pay a year in advance. If you were a March yearly trash member last year, you will have received an invoice the end of February with the discount already applied. If you want to stop your yearly payment, you can go back to quarterly payments just by paying \$64.50.

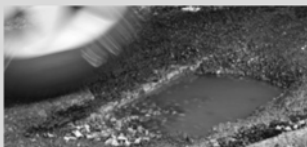
If you are a quarterly trash member, you may have noticed the discount mentioned on the 2nd Quarter invoice the end of February. If you decide to pay for the year, the total is \$238.00 with the discount. Just send the \$238.00 for receipt no later than March 9th.

Please ensure you include any outstanding payments as indicated on your bill.

Note that the yearly discount is not available if you need to put holds on your service – sorry snowbirds!

Potholes

Freeze / thaw effects on pavement can rapidly form potholes. Crews are dispatched as quickly as possible to repair potholes that create a hazardous condition. Please report potholes to:



<http://www.douglas.co.us/road-work/potholes/>
or call 303-660-7480 during normal business hours.




(From Douglas County Public Works website.)

WM
WASTE MANAGEMENT
Customer Service
FCHOA@wm.com
303-797-1600

March 2017

Sun	Mon	Tue	Wed	Thu	Fri	Sat
			1	2	3	4
5	6 Pinery Trash Pickup	7	8 Trash Payments Due	9 CSC Meeting 7:00 p.m.	10 Noon deadline for ARC meeting	11
12	13 Pinery Trash Pickup & Recycle 	14 ARC Meeting 6:30 p.m. 	15	16	17	18
19	20 Pinery Trash Pickup	21	22	23	24	25
26	27 Pinery Trash Pickup & Recycle 	28	29	30	31	

April 2017

Sun	Mon	Tue	Wed	Thu	Fri	Sat
						1
2	3 Pinery Trash Pickup	4	5	6	7 Noon deadline for ARC meeting	8
9	10 Pinery Trash Pickup & Recycle  newsletter deadline	11 ARC Meeting 6:30 p.m. 	12	13 CSC Meeting 7:00 p.m.	14	15
16	17 Pinery Trash Pickup	18	19	20	21	22
23	24 Pinery Trash Pickup & Recycle 	25	26 PHA Executive Board Meeting 6:30 p.m.	27	28	29
30						

May 2017

Sun	Mon	Tue	Wed	Thu	Fri	Sat
	1 Pinery Trash Pickup	2	3	4	5 Noon deadline for ARC meeting	6
7	8 Pinery Trash Pickup & Recycle 	9 ARC Meeting 6:30 p.m. 	10 PHA General Meeting—7:30 p.m. ARC Election	11 CSC Meeting 7:00 p.m.	12	13
14	15 Pinery Trash Pickup	16	17	18	Pinery Garage Sale	
21	22 Pinery Trash Pickup & Recycle 	23	24	25	26	27
28	29 MEMORIAL DAY  Office Closed	30 Pinery Trash Pickup	31			