



PHA Operations During the Covid-19 Emergency

Thanks to all of our residents for their cooperation and consideration as we work through the Covid-19 restrictions and reopening.

Due to the limitations on space within The Pinery HOA office we continue to be closed for un-planned in-person visits. We continue to assist the Community through E-mail and telephone and are receiving payments by mail or our locking drop box.

If you need to arrange an in-person visit, please call or E-mail the appropriate office below. For the Pinery Trash or RV Storage programs - 303-841-8572 or pha@pinery.org.

For the Pinery Architectural Review Committee – 303-841-5305 or arc@pinery.org

To end an RV Storage Lot lease, please E-mail us with your name, current address, space number and date the space will be vacant. If you are moving, please provide a forwarding address for refund if applicable. The SouthMetro Fire Station Meeting Room is not yet available for meetings. Therefore, Architectural Review Committee meetings are currently not being held. Residents should continue to submit their plans for exterior changes by E-mail to ARC@pinery.org. We can also receive submittals in our locking

drop-box. If you have questions, contact our office at ARC@pinery.org or 303-841-5305. ARC staff will check for complete information and forward to the Committee for review and action by E-mail. Residents will be notified of the outcome as reviews are completed. Documentation of actions will be recorded monthly and approval letters sent.



Garage Sale rescheduled

September 25 & 26

9 a.m. to 3 p.m.

(See Page 9 for details)

CONTENTS:

- 2 Water Restrictions
CodeRed
- 3 Household Chemical Roundup Update
Fire Mitigation
- 4 Stage 1 Fire Restrictions
- 5 Who's Who of Pinery Snakes
- 7 Covenant Corner
PHA Board Members
- 8 Pinery Trash Form
- 9 Garage Sale Form
- 10 Slash Mulch
- 11 Emergency #s
- 18 Directory Pages
- 22 Community Calendar

Pinery Picnic & Kids' Fishing Derby Update

Good Day my fellow Pinery friends and neighbors. Following current recommendations given by both the state and local levels regarding large gatherings, the Pinery Picnic and Fishing Derby 2020 previously scheduled for August 15th will be cancelled.

This decision comes after great consideration regarding the health and safety of the families of our great community.

It will be an amazing celebration when we finally get to gather as friends and neighbors at Bingham Lake and our beautiful Lakeshore Park for Pinery Picnic and Fishing Derby 2021!!

Until then I wish for all our Pinery families health and peace!

Prayers for All!
Penelope Williams

Voluntary Water Restrictions

Pinery Residential & Commercial Customers



Even addresses: Tuesdays, Thursdays and Sundays

Odd addresses: Mondays, Wednesdays & Saturdays

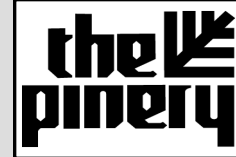
Fridays—No watering

No watering between 10 a.m. and 6 p.m.

**Hand Watering allowed anytime*

Pinery Water and Wastewater District

Customer Service: 303-841-2797



Use of the Pinery Logo

Because the Pinery logo is a registered trademark, it may not be used for any purpose by either an individual or corporation without written approval of the PHA Board prior to use.

Pinery Teens

The PHA office often receives calls asking if we have a list of those interested in doing lawn mowing. Just as with snow shoveling, they would prefer to pay a local young person rather than hire a company to do this. If you would like to be placed on our teen resource list for lawn mowing, please contact the PHA office at 303-841-8572.



Douglas County Emergency Notification System—CodeRED

Life can change in a moment - make sure you are connected to the CodeRED emergency notification system in Douglas County! The system, CodeRED, is a high-speed telephone emergency notification service allowing public safety agencies the ability to deliver pre-recorded information to targeted areas within the county.

Douglas County's public safety agencies encourage everyone to register their contact information in the CodeRED system (reverse 911). Registration is not automatic, but it may be critical to your safety and that of your family.

Please register online at dcsheriff.net.

Is Your House Number Clearly Visible?

Please make sure that your house number is placed on your home as well as on your mailbox. The numbers need to be large enough to be easily read from the street and in a color that can be clearly seen.

- Emergency vehicles need to be able to easily find your home
- Those delivering packages look for numbers on houses

**These are times when
you definitely want to be found.**

Fire Mitigation

Evacuation Drill

The Pinery evacuation drill that was scheduled for May 2, 2020 was postponed due to the coronavirus. The drill will be rescheduled for next spring.

Report Your Fire Mitigation Hours

During this beautiful time of year, it is a great time to do Fire Mitigation!

Please report your hours by going to the Pinery website, www.Pinery.org. Scroll down to **Pinery Fire Mitigation** and **Learn How**. Go to the bottom of the page and click on the **Log Your Mitigation Hours** and input the requested information. You can report on a single day or a range of days at one time.

All homeowners who submit hours will be entered in a quarterly drawing for one of three \$25 gift cards to local businesses.

Douglas County Slash Site

See page 10 of this newsletter.

Pinery Chipper Days

Again, this year The Pinery will sponsor free chipping services to PHA residents in October. This service provides a chipper pick-up at the curb of residents who wish to participate in this program. If you think you are interested in participating this year,

please go on our website, PHA@Pinery.org, scroll down to **Pinery Fire Mitigation** and **Learn How**. On next page click on **Evacuation Drill & Volunteering** and input the requested information. We will communicate additional information to you via email. Please add PHA@Pinery.org to your email contacts so it does not go into junk or spam mail. If you have questions, please call us at 303-841-8572.

Free Fire Mitigation Property Assessments

For a free assessment you can contact either Colleen Potton, our South Metro Fire Rescue's Community Risk Reduction Specialist at colleen.potton@SouthMetro.org or at 303-419-8807 or Jim Wattenburger, Wildlife Mitigation Specialist for Douglas County at jimiwheat@hotmail.com or at 707-972-8139.



Classic Pinery Filings Covenants Available Online

Covenants for Pinery filings 1-8A can be found on our website, www.pinery.org

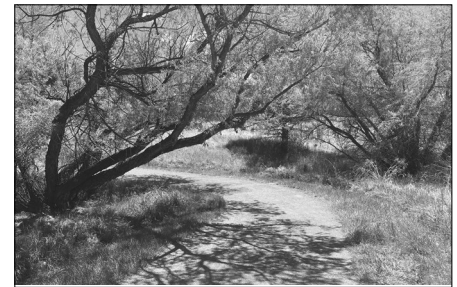
About/Board and Committees/Architectural Review Committee/Covenants

If you don't know your filing, there are instructions to help you determine which filing you are in.



Anonymous Complaints

Reminder: The Architectural Review Committee is unable to address anonymous complaints.



Douglas County Household Chemical Roundups

**All Chemical Roundups
have been postponed
at this time**

For more information, call: 303-846-6249
or visit
www.tchd.org/hcroundup



Pinery Trash Customers



If you would like Waste Management to deliver trash bins to your home (at no cost), you may do so by emailing:

fchoa@wm.com

- Be sure to specify the size and type (trash and/or recycling) of bin you would like. You may request up to 3 bins.
- Be sure to store the containers out of view other than service day per covenants.
- Be sure to say that you are with the Pinery Preferred Hauler program.

Homeowner

**September 2020
Newsletter Deadline
for Advertisers
August 10, 2020**

As of the writing of this newsletter Stage 1 Fire Restrictions are in place.

Sheriff Spurlock enacts Stage 1 Fire Restrictions for Unincorporated Douglas County

By Order of Sheriff Tony Spurlock **Stage 1 fire restrictions, are now in place.** Ordinance No. O-012-004, restricting open fires, open burning and the use of fireworks in the unincorporated areas of Douglas County.

General guidance on Stage 1 restrictions for Unincorporated Douglas County follows below:

Prohibited Activities:

- Open burning of any kind.
- Use of fireworks.

Allowable Activities:

- Fires within liquid-fueled or gas-fueled stoves, fireplaces within buildings, charcoal grill fires within developed residential or commercial areas, and fires within wood burning stoves within buildings only.
- Professional fireworks displays permitted according to section 12-28-103 of the C.R.S.
- Fire suppression or fire department training fires.
- Small recreational fires at developed picnic or campground sites contained in fixed permanent metal/steel fire pits (rock fire rings are considered temporary and not permanent) with flame lengths not in excess of four feet or the residential use of charcoal grills, tiki torches, fires in chimineas or other portable fireplaces or patio fire pits, so long as said fires are supervised by a responsible person at least 18 years of age.
- Professional fireworks displays.

Violation of these fire restrictions is a Class-2 Petty Offense, punishable by up to a \$1000.00 fine and a \$10.00 surcharge.

Additional information on fire restriction stages can be located at Douglas County Emergency Management.

THE WHO'S WHO OF PINERY SNAKES

By Jeff Rucks, retired wildlife biologist and Pinery Resident

Ask anyone who lives here: “Why did you choose to live in The Pinery?” The answer is always the same. We love living in a natural setting, where we wake up to the sound of song birds and gobbling turkeys, where people drive slower because there are deer along the roadway. We love our Ponderosa trees and our large lots with natural landscape. We wouldn't want it any other way.

But along with all these great reasons to live here, there are challenges. For one, our neighborhood is rich in wildlife diversity. We love our wildlife.....um.....right? Who doesn't enjoy watching baby foxes playing under the watchful eye of their mother, or the sight of a Redtail Hawk soaring overhead as it hunts for its dinner. On the flip side, wildlife by definition are “wild.” They go where they want and they do what they want to do. Woodpeckers drill holes in our cedar siding. Squirrels nest in our attics. And deer and rabbits eat our flowers (and every else!). But all this is ok with us. We get to live here too and we love it. We hang up our plastic owls, and squirrel-proof our bird feeders and we do all we can to coexist with these wonderful wild neighbors.

I hate to shatter this kum-ba-ya moment but there is one category of wildlife that does not enjoy this same level of love and acceptance. They don't harm our homes or our landscaping. They don't threaten our pets or harm our kids. Yet they are often vilified and can even drive away a would-be home buyer. Snakes are very common in our neighborhood. Just reading that sentence sends chills up the spines of some people. I understand that. But perhaps a better understanding of our leg-less friends will ease some fears and save a few snakes from the sharp end of a shovel.

Being on the edge of a Ponderosa pine forest, and the short grass prairie, there are a few species of snakes that come with the territory. Let's look at the most common snakes you may encounter in The Pinery. And let's look at what makes them so cool!

Back off Bucko or I'll Pee on Your Hand!



Garter Snake. Note the stripe on it's back.

Our most common snake is the *Garter Snake*. This is the one you are likely to encounter while weeding the garden or cleaning out the window well. They usually have a light-colored stripe running the length of their body. They aren't very big, usually about as big around as your thumb. They rarely bite and if they do it hardly leaves a mark. When attacked, they pee all over themselves, in the hope that the predator will lose its appetite and move on. If this doesn't work they roll over and play dead! So, when your child comes in from playing with a “dead” Garter Snake and his hand is all wet, get a bar of soap!

Bull Snakes and Rattlesnakes

Bull snakes are huge and hard to miss! They are also the most common snake pictured on “Next Door.” That is because they resemble a **rattlesnake on steroids**. An adult rattlesnake in our area is only about three feet long. Adult bull snakes are commonly six to eight feet long! When you see a six-foot snake on the bike path, it is definitely not a rattlesnake. In this case, bigger is better!



Bull Snake. Note the banded tail.

(continued on page 6)

(continued from page 5)

Bull snakes are MUCH more common here than rattlesnakes. In fact, in 33 years, **I have NEVER seen a rattlesnake in The Pinery**. The closest rattlesnake I have seen was south of Franktown, in Castlewood Canyon State Park. That doesn't mean they don't exist here, but it is very unlikely that you will encounter one. On the other hand, bull snakes are quite common here. They love to bask in the sun, so they are often seen stretched out across bike paths and trails.

A bull snake's biggest defense is also what gets it into hot water with humans. When frightened or threatened, it pretends to be a rattlesnake. And it is very convincing! This is pretty cool to see, but too often it drives the home owner to run to the garage and fetch a shovel. It already has similar markings to a rattlesnake. To complete the transformation, the snake will coil up and raise its head. It will shake its banded tail (the bands are meant to look like a rattle). The tail makes no noise so it makes a rattling sound with its throat. It will even spread out its jaw to create a triangular shape to its head similar to that of a rattlesnake. All this makes for a very threatening looking snake that is hoping beyond hope that you buy the ruse and leave it alone. Because, in the end it is still, and always will be, a harmless bull snake just putting on an act. Next time you see a "rattlesnake" shaking his tail, make sure he is really sporting a rattle on that tail and not a bull snake just trying to fake you out!



Bull Snake doing its Rattlesnake Act. Note the triangle shaped head.

But what about real rattlesnakes? How dangerous are they?



Prairie rattlesnake. Note the obvious rattle.

Our local rattler is a *Prairie Rattlesnake*. At just three feet long, it is relatively small, compared to its much larger cousin, the Diamondback, common in the desert southwest. Although we are on the edge of prairie rattler habitat, as I said, I have never seen one in The Pinery.

Rattlesnakes are not aggressive. In fact, they go to great extremes to avoid a conflict with people. They want nothing to do with us. When we get too close, they announce their presence by shaking their rattle. It's their way of saying "I'm afraid of you, please leave me alone." If we take heed and stay away, all is good. They strike only as a last resort.

Most rattlesnake bites are on the hand, indicating the person was messing with the snake. In my work, I've had several close encounters with rattlesnakes, nearly stepping on a couple before being startled by the sudden shake of their tail. I was probably more likely to suffer a heart attack than a snake bite! In each case we went our separate ways and no harm came to either snake or man. My point is that these snakes really, really don't want to hurt you and will avoid doing so at all cost. And they certainly don't want to waste their precious venom by injecting it in your leg! They need it to get their next meal.

Prairie rattlesnake venom is lethal to mice and voles but the dose is too small to kill a healthy adult human. If bitten, you need to go to the hospital for antivenom but you don't need to panic. You have a couple hours before feeling the effects of the venom. Pets and small children are more at risk, simply because they are smaller. Please don't react by cutting the bite and sucking out the venom. A compression band will help to slow the spread of the venom, but don't cut off the blood supply with a tourniquet. It's not worth losing an arm!

What's Cool about Pinery Snakes?

We have snakes because we have rodents. We have fewer rodents because we have snakes. Not only do they eat rodents, but snakes are food for our hawks and foxes and other predators. If you pay attention you'll often see a garter snake clenched in the talons of a soaring hawk.

Besides peeing on themselves, our snakes have other cool adaptations. Perhaps the coolest adaptation goes to the rattlesnakes. Rattlesnakes are pit vipers. They don't get this title because they live in a "*pit of vipers*." (We'll get back to that later.) Pit vipers get their name from the heat sensing pit (hole) between their eye and their nose. This pit can "see" the heat emitted by a mouse from several yards away even in complete darkness. Now, that's pretty cool!

Back to that *Pit of Vipers*

Every spring a few Pinery homeowners are dismayed and a bit freaked out to find a dozen or so snakes bunched together on their rock wall. These snakes are emerging from a hibernaculum where they have spent the winter hibernating. Being cold-blooded or *ectothermic*, snakes can't survive freezing temperatures. So, they gather in holes in the rocks where conditions are just right to keep them from freezing. Snakes are not social animals and dis-

COVENANT CORNER

The Pinery Architectural Review Committee



Congratulations to James Glavin, Ben Osborn and Marjorie Koerner who were re-elected to serve on the Architectural Review Committee during the May 2020 election.

Our thanks to James Murray who has served on the Committee since 2016 for his service to the Pinery in this way these past years.

There is currently an open position on the Committee. If you are interested in serving, please contact our office at 303-841-5305 or ARC@pinery.org.

Planning a Project?

Don't Forget Architectural Review

With our residents spending more time at home these days, many using the time on their yards and houses.

Remember that most exterior changes require approval by the Architectural prior to starting the project to ensure that it is compliant with Pinery Protective Covenants. While we remain unable to hold meetings, the Committee continues to review submittals by E-mail. See information regarding the Architectural Committee at pinery.org/architectural-review-committee for details. If you have questions or need more information, contact our office at arc@pinery.org or 303-841-5305.

perse soon after coming out of hibernation. These hibernaculum are unique and fragile places and should be protected.

Home Sweet Home

Whether it's snakes, or bats, or ticks, or even miller moths, these creatures are part of the natural world we love so much in The Pinery. I encourage everyone to embrace our diverse wildlife. Watch them and learn about them. And remember, the snakes are just part of the wild adventure we call home.



PHA Board of Directors

Sonia Eyre
President

Steven Stierstorfer
Vice-President

Penelope Williams
Treasurer

James Glavin
Director

Larry Ilg
Director

Ronnie Johnson
Director

Garry Kuka
Director



PHA Trash Program Enrollment Form

If you are not in the Pinery Trash Program, you might want to consider joining with the over 1800 other participating homeowners. The program offers state of the art trash service including Single Stream Recycling. This provides you with the opportunity to put paper and other recyclables together into a recycle container. If you would like WM to deliver trash bins to your home, you may do so by emailing: FCHOA@wm.com. Please specify the size and type of bin (64 or 96 gal./trash and/or recycling) you would like (You may have up to 3 containers.)

In addition, our program includes the removal of one Large or Bulk Item every month. Give Waste Management a call, set the item out with your regular household trash and say goodbye. That's twelve times a year you can get rid of a sofa bed, mattress, chair or other item without additional charges. If you have more than one item in a month low rates are offered.

Go to our website, www.pinery.org for more details.

All trash starts must be received in the PHA office no later than 1 p.m. on the Thursday prior to the desired Monday service day.



YES, I would like to join the Pinery Trash Program. Please begin my trash collection and billing under PHA's program as of the date checked below. I understand that the normal cycle will be billed in advance, quarterly.

<u>Starting Month</u>	<u>Please pay</u>	<u>Paid Thru</u>	<u>Starting Month</u>	<u>Please pay</u>	<u>Paid Thru</u>
<input type="checkbox"/> January	\$67.50	March	<input type="checkbox"/> July	\$67.50	September
<input type="checkbox"/> February	\$47.75	March	<input type="checkbox"/> August	\$47.75	September
<input type="checkbox"/> March	\$95.50	June	<input type="checkbox"/> September	\$95.50	December
<input type="checkbox"/> April	\$67.50	June	<input type="checkbox"/> October	\$67.50	December
<input type="checkbox"/> May	\$47.75	June	<input type="checkbox"/> November	\$47.75	December
<input type="checkbox"/> June	\$95.50	September	<input type="checkbox"/> December	\$95.50	March

In order to participate in the Pinery trash program, property membership dues must be current. Please call 303-841-8572 to determine any membership amount outstanding or previously paid:

+/- Membership \$_____ - Total Enclosed \$_____

I understand that my next quarterly billing will include trash collection and program fees. I understand that I am responsible for canceling any other service arrangements I may have.

Name: _____

Address: _____

Phone: _____ Email: _____

AGREEMENT

By submitting this enrollment form with initial payment, the above Pinery resident and/or homeowner ("Homeowner") hereby authorizes The Pinery Homeowners' Association, Inc. ("PHA") to engage its contracted trash service to collect and dispose of Homeowner's normal household waste materials at the above described Pinery residence. Homeowner warrants that all waste materials offered for collection will not contain any hazardous, toxic or radioactive wastes or substances as defined by applicable federal, state or local laws or regulations. Homeowner agrees to pay PHA in advance within 15 days of billing for trash service at the PHA's then current rates until such time as Homeowner notifies PHA of Homeowner's termination from the PHA trash program. Failure to pay as specified which results in rebilling and/or termination will incur fees to cover the PHA cost of these actions. Homeowner shall be solely responsible to the contracted trash service for any additional services requested which are not included in PHA's normal trash program. Homeowner acknowledges and agrees:

1) that PHA is merely acting as a billing agent for the contracted trash service; 2) that Homeowner shall not receive any refund upon termination of Homeowner's participation in PHA trash program unless Homeowner provides advance notice to PHA, including address to which refund should be sent; and 3) that PHA will not be liable for any act or failure to act on the part of the contracted trash service, including, without limitation, violation of laws or regulations, injury or death to persons or animals and loss or damage to property or the environment.

Signature _____

Date _____

PLEASE NOTE: This form must be signed prior to participation in the PHA trash program.

MAIL WITH PAYMENT TO: PHA, 8170 Hillcrest Way, Parker, CO 80134.



Annual Pinery Garage Sale

September 25 & 26, 2020

9 a.m. to 3 p.m.

Get on the map: To be included on this year's map, please complete the form below and drop it off or mail it to the PHA office, 8170 Hillcrest Way, **no later than Tuesday, September 15.**

There will be a \$5.00 fee for non-PHA members. The number of residents on the map will be limited to 100 so get your name in early.

Pick up a map: Garage sale maps will be distributed to "shoppers" as they enter the Pinery September 25 & 26. **Maps will be available in three locations:**

- North Pinery Pkwy & Parker Rd.
- South Pinery Pkwy & Pinery Dr.
- Sunridge Hollow & Betts Ranch Rd.

**Great Community Service
opportunity for
high school students.**

Yard signs: A *limited number* of **free directional signs** will be available to participants to help advertise your sale. Signs will be distributed on **Wednesday, September 23**, behind the fire station from 5:30 to 7 p.m. or until they are gone!

Call the PHA office
with questions:
303-841-8572.

Turn my 'Trash into Cash'! Please add my address to the Garage Sale Map!

Name: _____

Address: _____

Phone: _____ **Email:** _____

Non-PHA Member ☐ \$5.00 fee enclosed

If you have items in a particular category, please check below:

- ☐ antiques/artwork ☐ large appliances ☐ books ☐ clothes (infant/children/adult)
☐ dishes/kitchen items ☐ furniture ☐ home décor ☐ plants/gardening items
☐ sports/exercise equipment ☐ toys ☐ other _____

Please mark below the day(s) your sale will take place:

☐ Both September 25 & 26 ☐ September 25th only ☐ September 26th only

If your student would like to volunteer to hand out the Garage Sale maps on September 25 & 26, please include his/her information here:

Student's name: _____

Student's contact phone: _____

2020 Slash/Mulch Site Opening
Saturdays ONLY April 4 - October 31
8 a.m. - 5 p.m.

Due to the limited size of the slash/mulch site, all citizens visiting the site are requested to follow the Colorado regulations to stay in your vehicle until you are ready to unload and to keep the social distance requirement of 6 feet while unloading slash or picking up mulch. Your cooperation and patience is appreciated.

Wildfire preparedness begins at home.
Dispose of tree limbs, shrubs and brush properly.

Douglas County's slash-mulch site, at 1400 Caprice Drive in Castle Rock, opened April 4 and will remain open on Saturdays-only from 8 a.m. – 5 p.m. through October 31. The perfect place to dispose of limbs, shrubs and brush. The site also gives residents the opportunity to go home with fresh mulch.

Acceptable items include: tree limbs, loose pine needles, shrubs, brush with a maximum length of 6 ft. and maximum diameter of 12 inches. Please note all loads must be covered when they arrive at the site.

Items that will not be accepted include: appliances, compost, decorative wood chips, fencing, leaves, pine cones, yucca plants, dirt, grass/hay, household trash/yard waste, lumber, railroad ties, roots, stumps and weeds.

During open season a County operated loader will be available to load free wood chips for homeowners to use as mulch. Material can be picked up anytime during the season the site is open to accept slash.

The Site Operator has the authority to refuse loads and require residents to reload and/or haul away materials found not to be in compliance with the regulations.


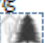

In the event of inclement weather, please call 303-663-6274 to ensure that the site will be open as scheduled.

The County respectfully requests that residents DO NOT leave materials anywhere on the site when it is closed/unattended.




Douglas County and the Wildfire Mitigation Specialists encourage property owners to use this opportunity to perform mitigation work and reduce hazardous fuels on their land. Douglas County Wildfire Mitigation Specialists offer free site visits to determine the safety of a property at no cost, upon request. Call 303.660.7497 to request a consultation for information on Wildfire Mitigation.

"The Pinery Homeowner" is a publication of The Pinery Homeowners' Association, Inc. (PHA), a private, not-for-profit organization. The PHA reserves absolute editorial discretion over the content of the *Homeowner* and may reject a submission for any reason. Advertisement in *The Pinery Homeowner* should not be construed as an endorsement of products or services by The Pinery Homeowners' Association. The *Pinery Homeowner* is the medium through which the PHA communicates with its members. It is not a forum for the views of individual members of the PHA or other individuals or groups.


July 2020

Sun	Mon	Tue	Wed	Thu	Fri	Sat
			1	2	3 <i>Office closed</i>	4
5	6 Pinery Trash Pickup	7	8	9 <i>CSC Meeting 6:30 p.m.</i>	10 <i>Noon deadline for ARC meeting</i>	11
12	13 Pinery Trash Pickup & Recycle 	14 <i>ARC Meeting 6:30 p.m. (tentative)</i> 	15	16	17	18
19	20 Pinery Trash Pickup	21	22	23	24	25
26	27 Pinery Trash Pickup & Recycle 	28	29	30	31	

August 2020

Sun	Mon	Tue	Wed	Thu	Fri	Sat
						1
2	3 Pinery Trash Pickup	4	5	6	7 <i>Noon deadline for ARC meeting</i>	8
9	10 Pinery Trash Pickup & Recycle  <i>newsletter deadline</i>	11 <i>ARC Meeting 6:30 p.m. (pending)</i> 	12	13 <i>CSC Meeting 6:30 p.m.</i>	14	15 <div>Pinery Picnic, & Fishing Derby Cancelled</div>
16	17 Pinery Trash Pickup	18	19	20	21	22
23	24 Pinery Trash Pickup & Recycle 	25	26 <i>PHA Executive Board Meeting 6:30 p.m.</i>	27	28	29
30	31 Pinery Trash Pickup					

September 2020

Sun	Mon	Tue	Wed	Thu	Fri	Sat
		1	2 <i>Quarterly trash Payments due</i>	3	4 <i>Noon deadline for ARC meeting</i>	5
6	7  <i>Office Closed</i>	8 Pinery Trash Pickup & Recycle ARC Meeting 6:30 p.m. (pend)	9 <i>PHA General Meeting</i>	10 <i>CSC Meeting 6:30 p.m.</i>	11	12
13	14 Pinery Trash Pickup	15	16	17	18	19
20	21 Pinery Trash Pickup & Recycle	22	23	24	25	26 <div>Pinery Community Garage Sale</div>
27	28 Pinery Trash Pickup	29	30			