



CONTENTS:

- 2 Sponsor Thank You
Pinery Pal
- 3 Volunteer Thank You
- 4 Pinery Little Free
Library
- 5 Fire Mitigation
- 6 Pinery Picnic Pics
- 8 Art Show Pics
- 10 Kids' Fishing Derby
Pics
- 12 Covenant Corner
- 13 Walking Your Dog
- 14 DC Chemical Roundup
Board of Directors
- 15 Slash/Mulch
Voluntary Water
Restrictions
- 16 NL Advertisers' Info
- 17 Legacy Academy
2016 General Election
- 18 Pinery Water Pump
Station 1
- 19 Trash Form
- 20 Emergency #s

Classified Ad
- 28 Directory Pages
- 32 Community Calendar

County Commissioner coming to PHA General Meeting

We are pleased to have Douglas County Commissioner David Weaver to speak at our General Meeting, Wednesday, September 14. Mr. Weaver, former Douglas County Sheriff, is the Commissioner for District 1, which includes The Pinery. He will give us an overview of Douglas County Government and be available to answer brief questions about our county.

Neighborhood Fire Mitigation Meetings

Saturday, August 27
from 9-10 a.m.
or
Monday, September 12
from 6:30—7:30 p.m.

If you are interested in reducing the risk of fire at your home and would like to take advantage of the chipper days referred to in the article on page 5, you will need to attend one of these meetings.

The Fire Mitigation Committee headed by Einar Jensen, South Metro Fire Rescue Authority is working very hard to reduce the fire risk to The Pinery.

Labor Day

Pinery Trash Pickup
Tuesday, September 6th

Pinery Trash Payments

for the 4th quarter
of 2016
(Oct. Nov. & Dec.)
will be due

Sept. 7, 2016

PHA General Meeting September 14, 2016

Pinery Fire Station
Meeting Room

6:45 p.m. Newcomers' Meeting
7:30 p.m. Main Meeting

Agenda

Guest, David Weaver
Douglas County Commissioner

2017 Budget

*Refreshments Provided
Complimentary Child Care*

We so appreciate the Pinery Picnic Event Sponsors.



10233 S. Parker Road, Suite 107
Parker CO 80134
303.840.5454

www.iThriveYoga.com
grow@iThriveYoga.com



Orten
Cavanagh &
Holmes, LLC
ATTORNEYS AT LAW

Your top choice for general counsel, assessment
collections and covenant enforcement

Denver • Colorado Springs • Basalt
1445 Market Street, Suite 350, Denver, CO 80202
720-221-9780 • Toll Free 888-841-5149
www.ochhoalaw.com • Email info@ochhoalaw.com

Thank
you.



THANKS to ALL Who Rode With Us
at the Pinery Picnic This Year!

CONGRATULATIONS
TO ALL
25 WINNERS!
Of Gift Certificates to
Local Restaurants
SEE YOU NEXT YEAR!

Carolyn Williamson 303-883-7173
carolyn@carolynwilliamson.com



Thank
you.

Pinery Pal

This episode: The Picnic and Art Show

August 6th dawned early for the volunteers. They assembled the grids for the artists, set up tents for shade, and distributed drinks delivered by our neighborhood King Soopers – chilled. The Kids' Fishing Derby... Indeed a day of fun in the Pinery! Smiling faces – some adorned with cartoon characters, old friends, new friends, neighbors all enjoying the food and festivities that made this a very special day.

Your Pinery Pal was intertwined among the celebrants and noticed several new neighbors in attendance, some newly arrived in our fold and some more firmly ensconced that have not yet participated. All, however, avowed to return next year setting the stage for an even bigger and better event to come!

Special thanks to all of the folks in the neighborhoods that pitched in to make this event shine as without them it would have been just another Saturday in the park.

Please do take note that it is the volunteers that make The Pinery what it is for all of us to enjoy. It is our duty as neighbors to pitch in whether it be for one event, or year round to continue to enjoy our beautiful community with so little restriction and our profound return on investment for what we receive in exchange for what we pay in annual dues.

Until next time,

Pinery Pal

Our Volunteers are the best!



Penelope Williams

Picnic &
Volunteer Coordinator



Cyndi Mumm

Art Show
Coordinator

Thank you,
Community Services Committee
for all your hard work to make this event
a great success!!



Jeff Rucks

Kids' Fishing Derby
Coordinator

Volunteers: Madison Blackburn, Julie Brinkley, Aiden Clifton, Riley Clifton, Kendle Frank, Carolyn Gress, Warren Gress, Bob Hult, Sally Hult, Riley James, Olivia Lombard, Erin Markel, Reese Markel, Ryann Markel, Matt Markel, Cyndi McCurley, David McCurley, Bryan Miller, Jyl Moore, Katerina Moore, Anthony Orlandino, Luciano Orlandino, Nicolas Orlandino, Katy Phillips, Sandy Phillips, Hannah Smith, Judith Stokes, Lucy Weaver, Sarah Woods, Sister Nelson, Sister Riddle, Sister Wilcox, Sister Smithson.

(We apologize if we have missed listing anyone who helped with this event.)



Thank you to Kenneth Hodge for sharing the festive music from his street organ.



The PHA would like to express appreciation to Ward Williams and Bobcat of Parker for the use of the Bobcat utility cart at the Picnic.

The Pinery's Little Free Library

Little Free Libraries are a global phenomenon. The small, front yard book exchanges number 36,000 around the world in 70 countries — from Iceland to Tasmania to Pakistan. Now there is a Little Free Library in The Pinery at 5875 Thunderhill Road (down the street from Lakeshore Park) and will join the movement to share books, bring people together and create a community of readers.

The Little Free Library being a “take a book, return a book” is not intended to be a book depository where you drop off unwanted books meaning please don’t drop off a box of books at the base of the library.

Anyone may contribute or take books. The more the merrier! If you take a book (or two) from the Library, you do not need to return that exact book. However, in order to keep the Little Library full of good choices for the whole neighborhood, the next time you swing by the Library, bring a book to share. Little Library book exchanges function on the honor system; everyone contributes to ensure there are always quality books inside. This way, we all win!

“Our Little Free Library doesn’t just belong to us, it belongs to the community,” says Beth Bershader. “It’s our hope that this Little Free Library will bring a little more joy, a little more connection and a whole lot more books to our community,” adds Keith Bershader.

The Little Free Library non-

profit organization has been honored by the Library of Congress, the National Book Foundation, and the American Library Association. The *Reader’s Digest* named them one of the “50 Surprising Things We Love about America.” Each year, nearly 10 million books are shared in Little Free Libraries. To learn more, please visit littlefreelibrary.org.

So feel free to stop by today and find a book that interests you or your child, from fiction to autobiography to self-help to children’s books and more plus drop one off while you’re visiting!!

The Little Free Library was reviewed and approved by the Pinery Architectural Review Committee before installation. It has been in place for several months. Beth Bershader recently reported to the ARC regarding comments from users. If you are interested in having a Little Free Library at your home, be sure to submit the book exchange box to the ARC for review prior to installation.



2016 Pinery ACH Trash Payment Schedule

If you are using the Pinery automatic pay system (ACH) to make trash payments, see the payment schedule below. \$64.50 will be paid out of your bank account on the following dates:

2016

March 9

June 8

September 7

December 7

Please be sure to inform the PHA office if your account changes for any reason, or if you wish to discontinue your ACH payment.



Classic Pinery Filings Covenants Available Online

Covenants for Pinery filings 1-8A can be found on our website,

www.pinery.org

From the menu on the left of the screen, select Covenants.

If you don’t know your filing, there are instructions to help you determine which filing you are in.

Slash Removal Grant Helping Homeowners Improve Safety

By Einar Jensen, Risk Reduction Specialist
South Metro Fire Rescue

Thus far 2016 has been a “normal” wildfire season in Colorado. In addition to the few larger wildfires across the state, in our district firefighters have extinguished multiple smaller fires, up to 17 acres in size, that have threatened homes, families and livestock. The Pinery hasn’t had a wildfire yet, but it could and your neighborhood has so many families and homes, we deem the wildfire risk for your community to be HIGH.

We can’t change the weather or the topography, but we can change the amount of fuel that is available to burn if we work together.

The Pinery Homeowners Association (PHA) won a \$1,600 grant from the Colorado State Forest Service to host Slash Removal Days this fall. Slash is a synonym for the low-hanging branches homeowners cut from pine and oak trees as well as for entire clumps of junipers and firs, which we call “little green gas cans” for their flammability.

The PHA’s Wildfire Mitigation Committee has created a neighborhood mitigation plan to address the wildfire risk in the community. The plan identifies private property as the greatest source of wildfire fuels because properties have growing and built fuels that are flammable. The plan also identifies community slash removal as a prime strategy for eliminating those fuels.

Thus, the PHA will combine this grant with its own funds to host a total of four slash removal days where a local company will use a chipper to convert branches and logs into much smaller wood chips that will be hauled away and recycled or deposited on the homeowner’s property if desired by the homeowner.

Because the neighborhood mitigation plan has separated The Pinery into four geographic areas based on home and ecosystem characteristics, the chipper crew will spend one day – Sept. 25, Oct. 2, Oct. 9 and Oct. 16 – in each area.

In order to qualify to participate in the slash removal events, and learn which area your property sits, residents must meet both of the following criteria:

- The resident must be a dues-paying member of the PHA;
- The resident must attend one Chipping Orientation Meeting in which s/he will learn about the four areas, the basics of wildfire mitigation and proper chipping etiquette. The first meeting was held Saturday, August 27. The second meeting will be Monday, September 12 from 6:30-7:30 p.m. Both meetings will be in the meeting room next to the PHA Office.

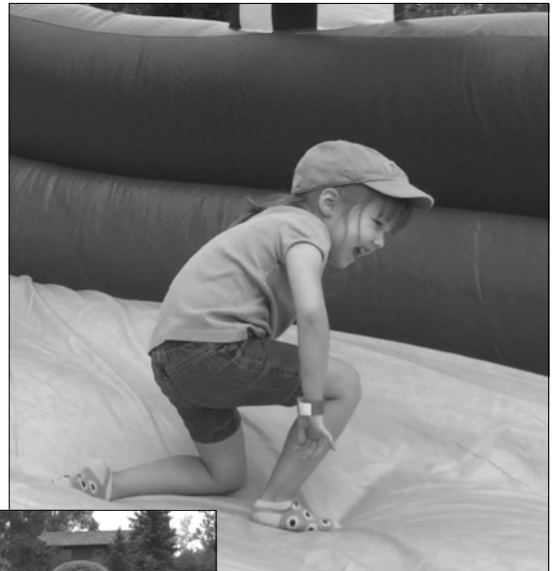
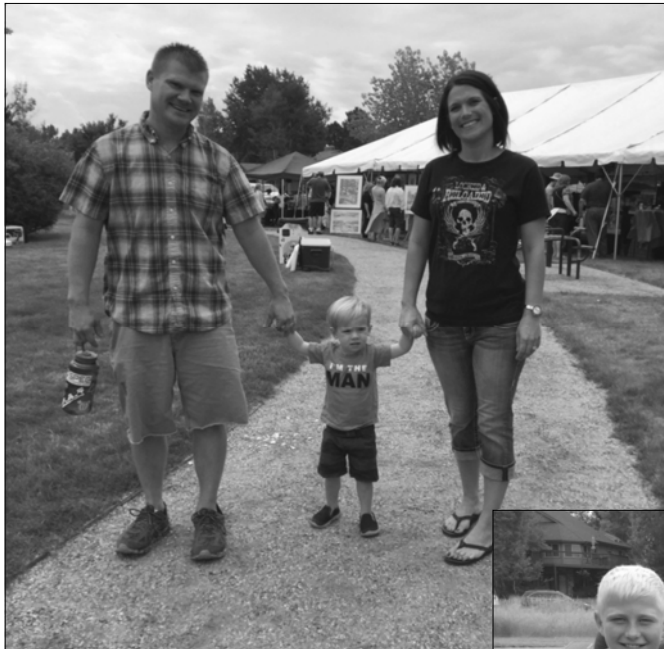
Homeowners are encouraged to contact South Metro Fire Rescue for guidance on what to cut or remove in advance of performing mitigation in order to maximize the benefits without compromising the quality of life in The Pinery. Schedule an appointment by emailing ReducingRisk@southmetro.org.

Pinery Trash Program—How many items can I put out for pick up by Waste Management?

A total of 10 containers or bags of household trash and/or yard waste are included with trash service. In addition, 4 bundles of brush can be put out.

Please call Waste Management for a special pick up if you have extra yard waste.

2016 Pinery Picnic



Friends & Family
Gathered





Cotton
Candy, Snow
Cones &
Horses



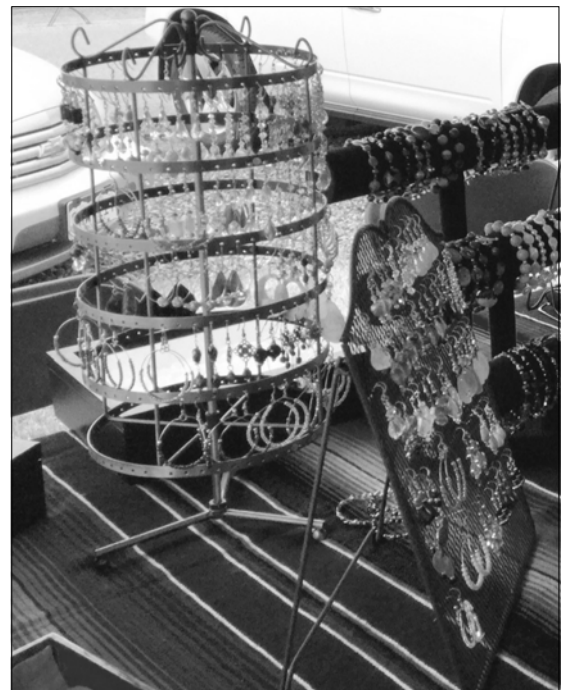
2016 Art Show



Art Show Winners

| | |
|-----------------------|----------------|
| Best of Show | Kristen Muench |
| 1 st Place | Kathy Friesz |
| 2 nd Place | Jacque Kear |
| 3 rd Place | Teresa Schuy |





2016 Kids' Fishing Derby

We had 55 kids participate in the fishing derby this year. Forty-eight fish were caught during the two hour event. The largest fish was a 13" largemouth bass. I could not have made this event happen without the terrific help and partnership with Dave Hause of Douglas County Open Space. Dave provided fishing rods, tackle and giveaways for all the kids. The kids even got to keep the rods he provided if they wanted them. Five great volunteers from our community also helped to make this event a huge success. They were: Biswadip Ghosh, John Phillips, Robby Phillips, Reese Markel and Douglas Ravnholdt. A big thank you goes out to all of them!



Six kids were awarded trophies for their exceptional catches!

Biggest fish: Legacy Cortright

Most fish: Nick Krauss

Biggest bass: Liberty Cortright

Biggest Perch: Kolbi Williams

Biggest Sunfish: Cole Cotes

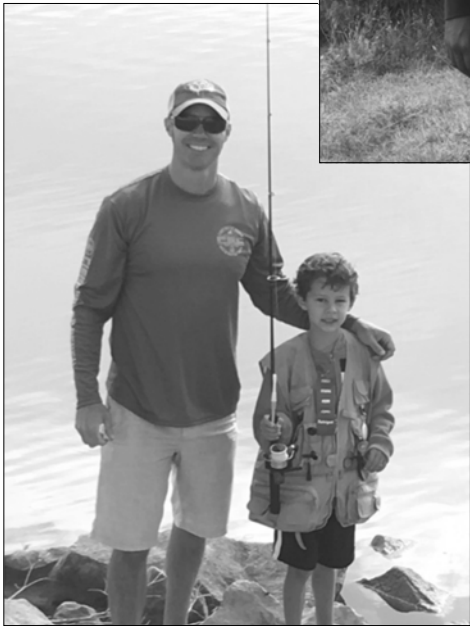


And a special trophy was awarded to Ryan Maas. He caught a lot of fish but they were all under five inches. So he received the "Most Minnow" award!

We are so fortunate to have wonderful resource like Bingham Lake in our community. So please take advantage of this community treasure and TAKE A KID FISHING!

Jeff Rucks





COVENANT CORNER

The Pinery Architectural Review Committee



The Pinery—A Covenant Community IV

I attended my first Pinery Picnic in August, further reinforcing and solidifying to me what is great about living in the Pinery. It was well attended and the food was really good. The spontaneous table conversations that arose introduced neighbor to neighbor and created an atmosphere of community that can be rare in the fast paced world we all are trying to navigate. I enjoyed watching the kids in the one-legged sack race partnered with parents and friends, as well as the outstanding display of arts and crafts in the main tent area. We have really talented neighborhood artists and artisans who appeared to have done great business with picnic attendees.

I volunteered to participate as the newly appointed Chairman of the Architectural Review Committee (ARC) by partnering with Einar Jensen from the Metro Fire Rescue Authority who spoke to people about fire mitigation and the upcoming October "Brush/Branch pick up drive". I in turn spoke to residents about the updating of the Covenants and noted some suggestions for change. I was very pleased with overall positive response from the community to update the Covenant rules as there seemed to be a clear understanding of how these rules have maintained our Pinery community as an exclusive place to reside as well as the need to stay current.

I will be working with our

HOA Attorney and other community volunteers to review the entire document to assure legally necessary language is included and bring us up to date with County, State and Federal laws governing community development and maintenance. In addition, we will be discussing some rule additions necessary to keep current with Homeowner issues and challenges.

Residents should expect to hear from our volunteer panel beginning in September regarding the proposed updates to our governing documents. We will be soliciting feedback so your anticipated cooperation will be greatly appreciated as well as supportive to the effort.

Public Schools in the Pinery Area



Mountain View Elementary (K-2)

8502 N. Pinery Parkway
303-387-8675



Sagewood Middle School (6-8)

4725 Fox Sparrow Rd.
303-387-4300



Northeast Elementary (3-5)

6598 N. State Highway 83
303-387-8600



Ponderosa High School (9-12)

7007 E. Bayou Gulch Rd.
303-387-4000



Anonymous Complaints

Reminder: The Architectural Review Committee is unable to address anonymous complaints.



Homeowner

**November 2016
Newsletter Deadline
October 10, 2016**

WALKING YOUR DOG IN THE PINERY

Many residents enjoy on a regular basis walking their dog(s) in The Pinery, culminating in a walk through the open space where currently many flowers are in bloom and the grass is tall. A great deal of neighborhood socialization occurs there and it is a great chance to meet neighbors from other neighborhoods. It is truly a great experience. The HOA would like to offer a few reminders.

- When walking your dogs through the residential area, they should be on a leash at all times to keep your pet under control. Some dogs will chase deer and other animals, which can be dangerous to those driving through the residential streets or to children playing in the yard. Allowing dogs to be off-leash is also in violation of Douglas County Law (DC Resolution-999-177). Living here for a long time or feeling your dog is “trained” does not give you a pass to walk through our streets unleashed.
- Always carry a “Poo Bag” and pick up after you dog. Being in the open space does not preclude you from cleaning up, as dogs often “Poo” on the trail where Pinery folks walk. Bring your bag of “Poo” home to dispose of it. Do not leave it at the side of the trail or road to pick up later, as usually folks forget.
- If you are using a long retractable leash control your Dog and don’t let them urinate on lawns. Resulting brown spots tend to anger homeowners who take pride in their lawns and spend considerable time and money keeping them this way.
- When approaching or overtaking folks on our streets, don’t assume your dog is welcome to freely visit without politely asking if your dog may approach. Some dogs are easily excitable and doggie politics can take over, possibly causing injury to the dogs or a person, especially if attempts are made to break up the dogs involved.
- Do not let your dog off leash in or near where children are playing, at either residential areas adjacent to the open space or in play areas developed and maintained by the HOA for everyone’s enjoyment.
- Be respectful of your neighbors, if your dog’s presence is causing another residents dog to bark, especially one that is not out, please move along and carry on any conversation out of sight of the homebound dog.
- Do not leave your dog in the car unattended, even if only stepping away for a short time, as the car can heat up to over 104 degrees in a few minutes.
- Make sure you dog’s immunizations are up to date. A tag with the owner’s information, including a phone number, address and dog’s name will assist the Sherriff’s department in returning your dog should they get lost (if it is not a habitual offender!). The owner must keep a current Rabies certificate and all dogs must wear their Rabies vaccination tag at all times. A microchip is a very good idea since most Vets and authorities have chip reading technology.

For more information about dogs, wildlife and dead animal removal please refer to the following website: www.dcsheriff.net/animals

What do I do if I want to file a complaint: Please refer to the following web site:

<http://www.dcsheriff.net/animals/filing-a-complaint/animal-complaint-form/>

Douglas County Household Chemical Roundups

9 a.m.—3 p.m.

Open to residents of Douglas County

Acceptable Items: oil-based paint and paint products, automotive fluids, antifreeze, vehicle and household batteries, house and garden chemicals, fluorescent light bulbs, CFLs, fuels, items containing mercury, propane tanks, and car and pickup truck tires (remove from rim).

Unacceptable Items: business and commercial waste, radioactive waste, electronic waste (computers, TVs, etc.), explosive waste, smoke detectors, scrap metal, oil drums, asbestos, medical waste or any compressed gases other than propane.

You will need: a driver's license, water bill, utility bill or phone bill as proof of residency.

Cost: A contribution of \$25 per vehicle is requested to help offset the high cost of hazardous waste disposal.

Latex Paint Disposal Tips:

- Water-based latex paint is NOT a hazardous waste, and can be safely disposed of with your regular household garbage once it is dried out and no longer liquid
- Mix the paint with kitty litter, dirt or sand to help it dry out and solidify
- Break the top layer and stir so that wet paint underneath can dry faster
- Dried-out cans of paint with the lid off can be discarded in household trash

For more information, call:
Roundup Hotline
720-200-1592
or visit
[www.tchd.org/
householdchemical.htm](http://www.tchd.org/householdchemical.htm)

**Saturday
October 1, 2016**
Town of Castle Rock Utilities
175 Kellogg Ct
Castle Rock

Unincorporated Douglas County Fire Restrictions

As this newsletter goes to press, Stage 1 Fire restrictions are in place.

Stage 1:

- No open burning of any kind.
- No use of fireworks.

Violation of these fire restrictions is a Class-2 Petty Offense, punishable by up to a \$1000 fine and a \$10 surcharge.

You may want to check the Douglas County website <http://www.dcsheriff.net/sheriffs-office/divisions/emergency-management/fire-restrictions/> periodically to see if fire restrictions are in place.



PHA Board of Directors

Cyndi Mumm
President

Sonia Eyre
Vice President

Ray Guth
Secretary

Ronnie Johnson
Treasurer

Jay Colas
Director

Robert Husson
Director

Jeff Rucks
Director

"The Pinery Homeowner" is a publication of The Pinery Homeowners' Association, Inc. (PHA), a private, not-for-profit organization. The PHA reserves absolute editorial discretion over the content of the *Homeowner* and may reject a submission for any reason. Advertisement in *The Pinery Homeowner* should not be construed as an endorsement of products or services by The Pinery Homeowners' Association. The *Pinery Homeowner* is the medium through which the PHA communicates with its members. It is not a forum for the views of individual members of the PHA or other individuals or groups.

2016 Slash/Mulch Site Opening

Saturdays ONLY May 7 - October 29
8 a.m. - 5 p.m.

To help residents clear their properties of dead tree branches and shrubbery, a slash/mulch site will be open through October 25. The site will be open from 8 a.m. and 5 p.m., Saturdays only and is located at 1400 Caprice Dr. in Castle Rock. In case of inclement weather, please call 303.663.6274 to confirm the site is open.

Acceptable items: tree branches and shrubbery with a maximum length of 6 ft. and maximum diameter of 12 inches. All loads when brought in must be covered and tied down.

Not Accepted: stumps, roots, lumber, railroad ties, grass, dirt, household trash, loose pine needles, appliances and weeds.

Free wood chips are available to homeowners for use as mulch. An equipment operator is onsite to load wood chips. Material can be picked up anytime during the season the site is open to accept slash.

The County respectfully requests that residents **DO NOT** leave materials anywhere on the site when it is closed/unattended.

Douglas County and the Wildfire Mitigation Specialists encourage property owners to use this opportunity to perform mitigation work and reduce hazardous fuels on their land. Douglas County Wildfire Mitigation Specialists offer free site visits to determine the safety of a property at no cost, upon request. Call 303.660.7497 to request a consultation for information on Wildfire Mitigation.

Douglas County Emergency Notification System—CodeRED

Life can change in a moment - make sure you are connected to the CodeRED emergency notification system in Douglas County! The system, CodeRED, is a high-speed telephone emergency notification service allowing public safety agencies the ability to deliver pre-recorded information to targeted areas within the county.

Douglas County's public safety agencies encourage everyone to register their contact information in the CodeRED system (reverse 911). Registration is not automatic, but it may be critical to your safety and that of your family.

Please register online at douglascountycodered.com

Voluntary Water Restrictions

Pinery Residential & Commercial Customers



Even addresses: Tuesdays, Thursdays and Sundays
Odd addresses: Mondays, Wednesdays & Saturdays
Fridays—No watering

No watering between 10 a.m. and 6 p.m.

*Hand Watering allowed anytime

Pinery Water and Wastewater District

Customer Service: 303-841-2797



Use of the Pinery Logo

Because the Pinery logo is a registered trademark, it may not be used for any purpose by either an individual or corporation without prior written approval of the PHA Board prior to use.



Homeowner

2016 Information for Advertisers

When is “The Pinery Homeowner” published? It is published six times yearly: the first week of January, March, May, July, September, and November.

Who receives the newsletter? Distribution covers bulk mail to the six routes that serve the Pinery neighborhoods east of Parker Road. Total distribution is approximately 2,500 copies.

How do I submit an ad?

- Submit ads and payment to the PHA office on or before the advertising deadline. The deadline is noted in the Community Calendar section of the prior Newsletter.
- Submit ad digitally on computer disk or as an email attachment (See email address below).
- Submit ad in **at least 300 dpi**. (pdf, jpg and tif work well.)

Ad is to be sized and configured as described below.

Can I get a discount? A 10% discount is applied to ads placed for six issues or one calendar year.

| Newsletter Ad Specifications | | | PHA Members in good standing* | Non- PHA Members |
|------------------------------|---|-------------------------|-------------------------------------|---------------------|
| Business Card | 3.5” wide by 2” high | Horizontally configured | \$40 | \$70 |
| Quarter Page | 3.5” wide by 4.25” high | Vertically configured | \$70 | \$100 |
| Half Page | 7.25” wide by 4.25” high | Horizontally configured | \$110 | \$220 |
| Half Page** | (on Back Cover) | Horizontally configured | \$225 | \$400 |
| Full Page | 7” wide by 8.25” high | Vertically configured | \$220 | \$380 |
| Classified Ads | (approx. 35 characters/line) | | \$3/line | N/A |
| Directory Page | (This is a two-line ad with your business name, phone number, address, email, and web site listed by category.) | | \$5 | \$10 |

***Am I a PHA member in good standing?** You are, if you reside in Pinery filings 1-8a and have paid the \$33 membership fee in one of the following ways: directly; as a Pinery trash member; or as a Pinery RV Lot lessee. Residents in filing 8b (Pinery South), Northwoods Glen (filing 11) and Misty Pines who participate in the Pinery trash program are also eligible for PHA member rates.

The “Pinery Homeowner” is published as a communications service for our residents. The PHA is not liable in the event of errors or omissions in advertising or articles contained therein. The PHA reserves the right to accept, reject or request modifications to ads submitted and does not endorse products or advertisers.

Please direct any questions to **303-841-8572** between 8:00 a.m. and 3:00 p.m. Monday through Friday.

Advertisements and payments should be sent to:

The Pinery Homeowners' Association, Inc.
8170 Hillcrest Way, Parker, CO 80134
or
PHA@pinery.org

Leman Academy of Excellence Charter School

Leman Academy of Excellence is working with the Douglas County School District to open a new K-8 charter school in Parker, CO. Leman Academy of Excellence provides a Classical Education model with a curriculum that includes Spanish, Latin, Saxon Math, and Shurley English. Additionally, the parenting and child development philosophies of Dr. Kevin Leman are incorporated into the classroom, fostering a school culture that is encouraging and respectful. Leman Academy of Excellence offers a learning environment for youth that willingly engages and embraces parents in the educational process, highlighting the parent-teacher-scholar relationship to bring out

the best in the child. This partnership with parents is a cornerstone of Leman Academy of Excellence and is essential in maximizing a scholar's educational experience. For more information about Classical Education, Dr. Leman's philosophies, parent involvement and the Leman Academy of Excellence curriculum visit :

www.LemanAcademy.com.

In addition to collaborating with the Douglas County School District, Leman Academy of Excellence is working with the Town of Parker to build a facility near the intersection of Parker Road and Stroh Road. Recent collaborations with the Town include site plans, a traffic study and securing appropriate permits for signage.

LAE is initiating the planning process early to ensure that the facility is ready and the start of school will not be delayed.

Like all charter schools, Leman Academy of Excellence is a tuition free, public school that enrolls students by way of a lottery. The Leman Academy of Excellence lottery will take place in December of the year preceding the start of school. Students shall be considered for enrollment without regard to race, income, creed, gender, national origin, religion, ancestry, disability or need for special education. To submit your interest in enrollment or learn more about volunteer opportunities, visit www.LemanAcademy.com/parker.

2016 General Election

The 2016 General Election season is underway and working to ensure your mail ballot is delivered and counted in the General Election Tuesday, November 8, 2016. Over 200,000 mail ballots will be mailed to registered voters the week of October 17, 2016.

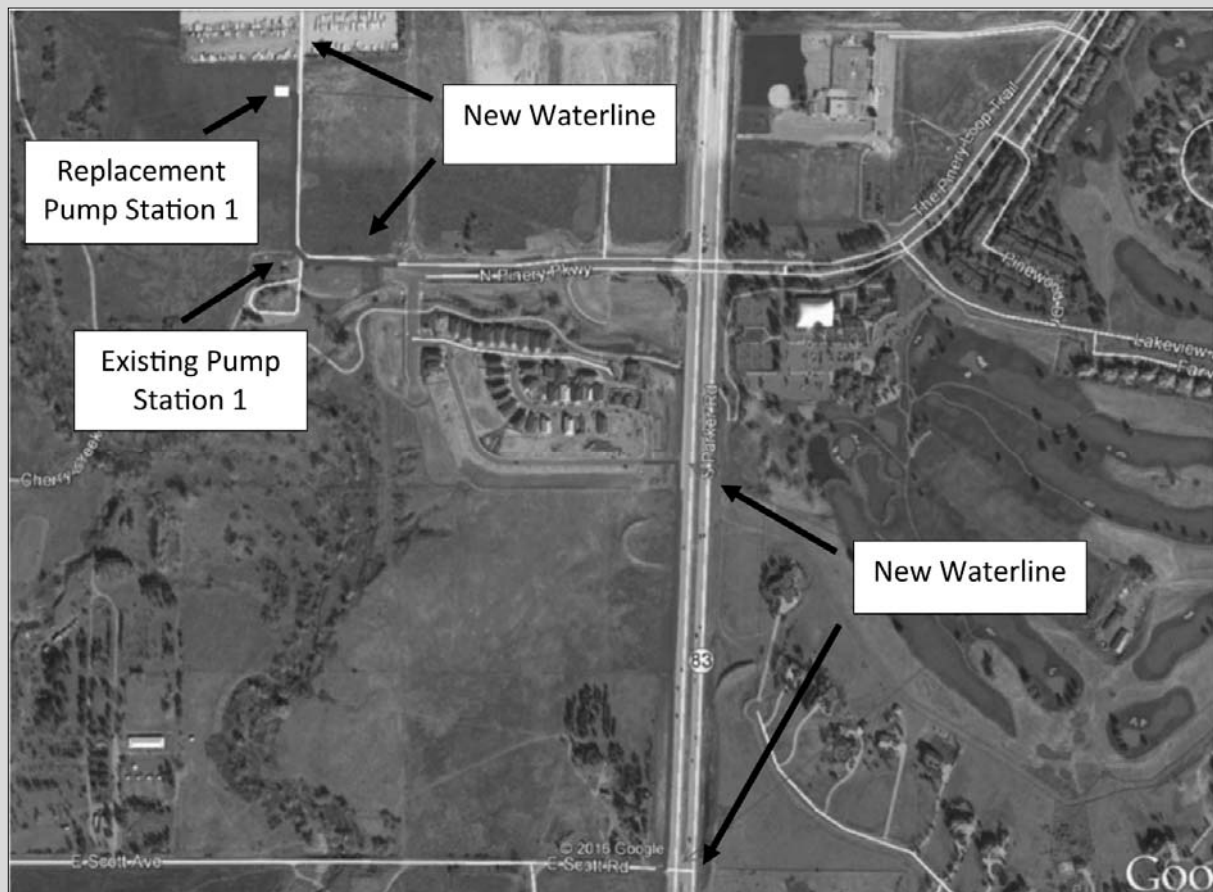
Douglas County Elections is asking for citizens to verify online at DouglasVotes.com their registration information or register to vote by **September 15, 2016**. The deadline is to secure delivery of their mailed ballot in the October mailing.

Don't Wait... Register...Check Address... DouglasVotes.com

DOUGLASVOTES.COM

Pinery Water & Wastewater District Pump Station 1 and Zone A Pipeline Project

The Pinery Water & Wastewater District is currently beginning construction to replace the existing Pump Station 1 due to age; the proposed Pump Station 1 will be located approximately 800 feet north of the existing facility (see exhibit below). Pump stations are critical facilities that allow the District to move drinking water to homes located in the higher elevations of the District's service area. The project will also add almost a mile of new waterline in the area of the new pump station and adjacent to State Highway 83 (see exhibit below). This new waterline will provide a more reliable water network for our customers. When finished, the old Pump Station 1 will be decommissioned.





PHA Trash Program Enrollment Form

New form as of
January 2016

If you are not in the Pinery Trash Program, you might want to consider joining with the over 1500 other participating homeowners. The program offers state of the art trash service including Single Stream Recycling. This provides you, with the opportunity to put paper and other recyclables together into a labeled container (we provide the labels) of your choice. Recycling must be separated from your regular household trash, but the recycling center now separates the paper from the bottles, cans, etc. You may choose to use a container with wheels and a lid for ease of handling.

In addition, our program includes the removal of one Large or Bulk Item every month. Give Waste Management a call, set the item out with your regular household trash and say goodbye. That's twelve times a year you can get rid of a sofa bed, mattress, chair or other item without additional charges. If you have more than one item in a month low rates are offered.

Go to our website, www.pinery.org for more details.

All trash starts must be received in the PHA office
no later than 1 p.m. on the Thursday prior to the desired
Monday service day.

YES, I would like to join the Pinery Trash Program. Please begin my trash collection and billing under PHA's program as of the date checked below. I understand that the normal cycle will be billed in advance, quarterly.

| Starting Month | Please pay | Paid Thru | Starting Month | Please pay | Paid Thru |
|-----------------------------------|------------|-----------|------------------------------------|------------|-----------|
| <input type="checkbox"/> January | \$64.50 | March | <input type="checkbox"/> July | \$64.50 | September |
| <input type="checkbox"/> February | \$45.75 | March | <input type="checkbox"/> August | \$45.75 | September |
| <input type="checkbox"/> March | \$91.50 | June | <input type="checkbox"/> September | \$91.50 | December |
| <input type="checkbox"/> April | \$64.50 | June | <input type="checkbox"/> October | \$64.50 | December |
| <input type="checkbox"/> May | \$45.75 | June | <input type="checkbox"/> November | \$45.75 | December |
| <input type="checkbox"/> June | \$91.50 | September | <input type="checkbox"/> December | \$91.50 | March |

In order to participate in the Pinery trash program, property membership dues must be current. Please call 303-841-8572 to determine any membership amount outstanding or previously paid:

+/- Membership \$ _____ - Total Enclosed \$ _____

I understand that my next quarterly billing will include trash collection and program fees. I understand that I am responsible for canceling any other service arrangements I may have.

Name: _____

Address: _____

Phone: _____ Email: _____

AGREEMENT

By submitting this enrollment form with initial payment, the above Pinery resident and/or homeowner ("Homeowner") hereby authorizes The Pinery Homeowners' Association, Inc. ("PHA") to engage its contracted trash service to collect and dispose of Homeowner's normal household waste materials at the above described Pinery residence. Homeowner warrants that all waste materials offered for collection will not contain any hazardous, toxic or radioactive wastes or substances as defined by applicable federal, state or local laws or regulations. Homeowner agrees to pay PHA in advance within 15 days of billing for trash service at the PHA's then current rates until such time as Homeowner notifies PHA of Homeowner's termination from the PHA trash program. Failure to pay as specified which results in rebilling and/or termination will incur fees to cover the PHA cost of these actions. Homeowner shall be solely responsible to the contracted trash service for any additional services requested which are not included in PHA's normal trash program. Homeowner acknowledges and agrees: 1) that PHA is merely acting as a billing agent for the contracted trash service; 2) that Homeowner shall not receive any refund upon termination of Homeowner's participation in PHA trash program unless Homeowner provides advance notice to PHA, including address to which refund should be sent; and 3) that PHA will not be liable for any act or failure to act on the part of the contracted trash service, including, without limitation, violation of laws or regulations, injury or death to persons or animals and loss or damage to property or the environment.

Signature

Date




PLEASE NOTE: This form must be signed prior to participation in the PHA trash program.

MAIL WITH PAYMENT TO: PHA, 8170 Hillcrest Way, Parker, CO 80134.

September 2016

| Sun | Mon | Tue | Wed | Thu | Fri | Sat |
|-----|---|---|---|-----------------------------|------------------------------------|-----|
| | | | | 1 | 2 | 3 |
| 4 | 5 LABOR DAY Office Closed | 6 Pinery Trash Pickup | 7 Quarterly trash Payments due | 8 | 9 Noon deadline for ARC meeting | 10 |
| 11 | 12 Pinery Trash Pickup & Recycle  | 13 ARC Meeting 6:30 p.m.  | 14 PHA General Meeting and 7:30 p.m. | 15 CSC Meeting 7:00 p.m. | 16 | 17 |
| 18 | 19 Pinery Trash Pickup | 20 | 21 | 22 | 23 | 24 |
| 25 | 26 Pinery Trash Pickup & Recycle  | 27 | 28 | 29 | 30 | |

October 2016

| Sun | Mon | Tue | Wed | Thu | Fri | Sat |
|-----|---|---|---|-----------------------------|------------------------------------|-----|
| | | | | | | 1 |
| 2 | 3 Pinery Trash Pickup | 4 | 5 | 6 | 7 Noon deadline for ARC meeting | 8 |
| 9 | 10 Pinery Trash Pickup & Recycle  newsletter deadline | 11 ARC Meeting 6:30 p.m.  | 12 | 13 | 14 | 15 |
| 16 | 17 Pinery Trash Pickup | 18 | 19 | 20 CSC Meeting 7:00 p.m. | 21 | 22 |
| 23 | 24 Pinery Trash Pickup & Recycle  | 25 | 26 PHA Executive Board Meeting 6:30 p.m. | 27 | 28 | 29 |
| 30 | 31 Pinery Trash Pickup | | | | | |

November 2016

| Sun | Mon | Tue | Wed | Thu | Fri | Sat |
|-----|---|---|-----|---|---|-----|
| | | 1 | 2 | 3 | 4 <i>Noon deadline for ARC meeting</i> | 5 |
| 6 | 7 <i>Pinery Trash Pickup & Recycle</i>  | 8 <i>ARC Meeting 6:30 p.m.</i>  | 9 | 10 | 11 | 12 |
| 13 | 14 <i>Pinery Trash Pickup</i> | 15 | 16 | 17 <i>CSC Meeting 7:00 p.m.</i> | 18 | 19 |
| 20 | 21 <i>Pinery Trash Pickup & Recycle</i>  | 22 | 23 | 24 Thanksgiving <div>Office Closed</div> | 25 | 26 |
| 27 | 28 <i>Pinery Trash Pickup</i> | 29 | 30 | | | |